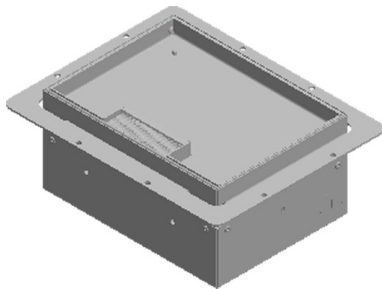


## 894

floor socket | 2 x Shuko + RJ45 + TV-SAT-R

Product code: 894016



### Floorsocket 894RUUVIHARJA

Limente floor sockets offer a stylish and timeless solution for distributing electricity, data, and antenna signals in all kinds of locations. Floor sockets are particularly convenient in car dealerships, supermarkets, stores, offices, commercial spaces, ships, and even in homes around kitchen islands. The washable and drive-over sockets are especially suitable for larger open spaces such as hypermarkets, car dealerships, cafes, and restaurant customer areas. Sockets intended for dry indoor installations are designed for offices and meeting or office spaces.

All Limente floor sockets are made with either aluminum or stainless steel frames, and their covers can be metal or the same material as the floor (carpet, wood, stone, laminate, parquet, etc.)

[Learn more from our website](#)

### Socket content options

A socket can be equipped as follows (other connectors are available on special order):

[Learn more from our website](#)

### Installation and Electrical Connection

The socket is installed as part of the floor by screwing it in place. The socket has a 200 x 200mm collar with 6 x 5mm holes for screw mounting. When installing on a raised floor, the flooring material goes on top of the collar.

[Learn more from our website](#)

#### THE FOLLOWING ITEMS ARE INCLUDED

- 2 x Shuko (protected grounded 230 V socket)
- 1 x RJ45 double
- 1 x TV-SAT-R
- detachable hinged lid with brush, screw fixing for raised floor

## FLOOR SOCKET 894-SSRA SCREWFAST + BRUSHED

## OVERVIEW

|                   |               |
|-------------------|---------------|
| PRODUCT CODE      | 894016        |
| GTIN-CODE         | 6430022823334 |
| ELECTRICAL NUMBER | 2509171       |
| ETIM GENERAL NAME |               |
| ETIM CLASS        |               |
| ETIM GROUP        |               |
| COLOUR            |               |
| LAMP TYPE         |               |

## SPECIFICATIONS

|                                   |   |
|-----------------------------------|---|
| PRODUCT DIMENSIONS                | 250.0 x 90.0 x 200.0  |
| MOUNTING METHOD                   | Flush mounting  |
| COLOUR TEMPERATURE                |   |
| COLOUR RENDERING INDEX CRI        |   |
| RATED LIFE TIME                   |   |
| ENERGY EFFICIENCY CLASS           |   |
| LUMINOUS FLUX                     |   |
| EFFICIENCY                        |   |
| VOLTAGE                           | 240 V   |
| INGRESS PROTECTION CODE           | IP10  |
| NUMBER OF LEDS/M                  |   |
| INPUT POWER                       |   |
| NUMBER OF SWITCHING CYCLES        |   |
| AMBIENT TEMPERATURE RANGE         | -20°C~50°C  |
| INPUT POWER CONNECTOR             |   |
| WARRANTY PERIOD (MONTHS)          | 24  |
| ADDITIONAL COVER (MONTHS)         |   |
| INSTALLATION AND OPERATING MANUAL | <a href="https://www.limente.fi/Images/productpics/instructions/Limente_894_uppokansi.pdf">https://www.limente.fi/Images/productpics/instructions/Limente_894_uppokansi.pdf</a> |

## FLOOR SOCKET 894-SSRA SCREWFAST + BRUSHED

### RECOMMENDED ACCESSORIES

| PRODUCT CODE | PRODUCT  |
|--------------|--|
| 680825       | PLACE HOLDER 892 JA 894, PLACE HOLDER 892 JA 894 |

## FLOOR SOCKET 894-SSRA SCREWFAST + BRUSHED

