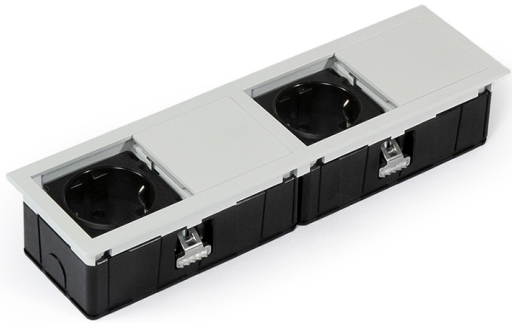


MONO-2

socket | white

Product code: 631755



A low, recessed power socket

LIMENTE MONO-2 and MONO-2USB are extremely low power sockets designed to be installed in table tops, shelves and other furniture. Due to its small and low design LIMENTE MONO-2 and MONO-2USB can also be used in separate, loose furniture, such as tables, couches or book shelves.

The power socket includes dustcover to cover the sockets, which makes the table top even when the power socket is not in use. MONO-2 and MONO-2USB have a classification of IP54 and can be used in humid conditions.

[Learn more from our website](#)

Color options

LIMENTE MONO-2 and MONO-2USB are made of metal and available in several different colors: stainless steel, black, white, bronze, gold, tin and champagne.

Installation

LIMENTE MONO-2 and MONO-2USB are quick and easy to install.

[Learn more from our website](#)

THE FOLLOWING ITEMS ARE INCLUDED

- socket with 2m supply cable
- grounded plug

MONO-2 SOCKET WHITE

OVERVIEW

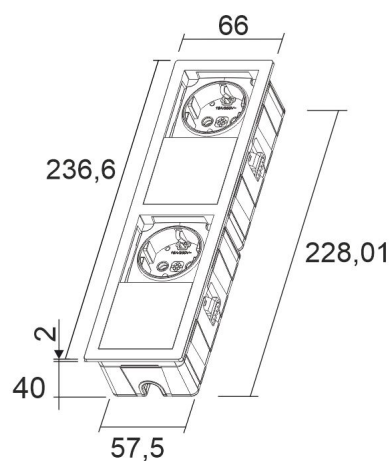
PRODUCT CODE	631755
GTIN-CODE	8028067055728
ELECTRICAL NUMBER	2529533
ETIM GENERAL NAME	Socket
ETIM CLASS	Socket outlet EC000125
ETIM GROUP	25 Flush sockets
COLOUR	
LAMP TYPE	

SPECIFICATIONS

PRODUCT DIMENSIONS	236.0 x 66.0 x 42.0
MOUNTING METHOD	Flush mounting
COLOUR TEMPERATURE	
COLOUR RENDERING INDEX CRI	
RATED LIFE TIME	
ENERGY EFFICIENCY CLASS	
LUMINOUS FLUX	
EFFICIENCY	
VOLTAGE	240 V
INGRESS PROTECTION CODE	IP54
NUMBER OF LEDS/M	
INPUT POWER	
NUMBER OF SWITCHING CYCLES	
AMBIENT TEMPERATURE RANGE	5°C~40°C
INPUT POWER CONNECTOR	
WARRANTY PERIOD (MONTHS)	24
ADDITIONAL COVER (MONTHS)	
INSTALLATION AND OPERATING MANUAL	http://www.limente.fi/Images/productpics/instructions/Limente_Mono2.pdf

MONO-2 SOCKET WHITE

LIMENTE MONO-2



LIMENTE MONO-2

